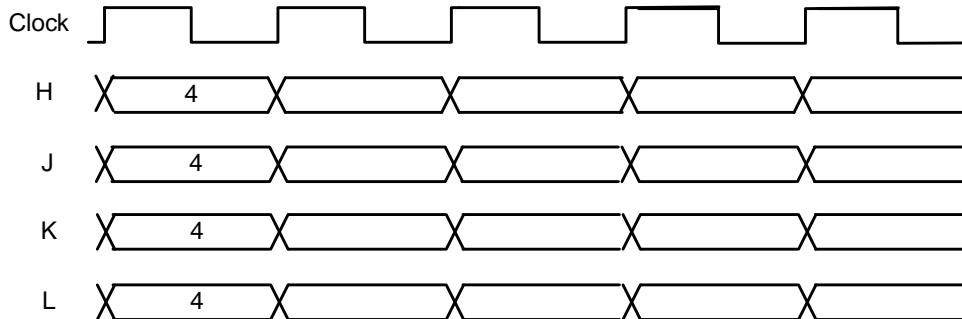
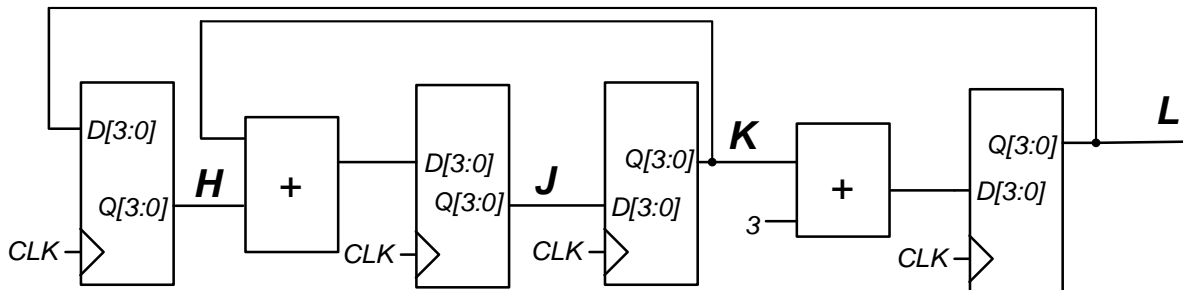


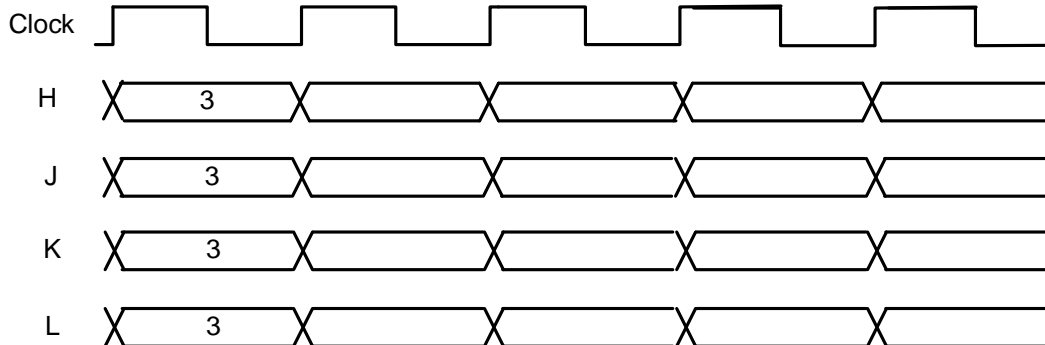
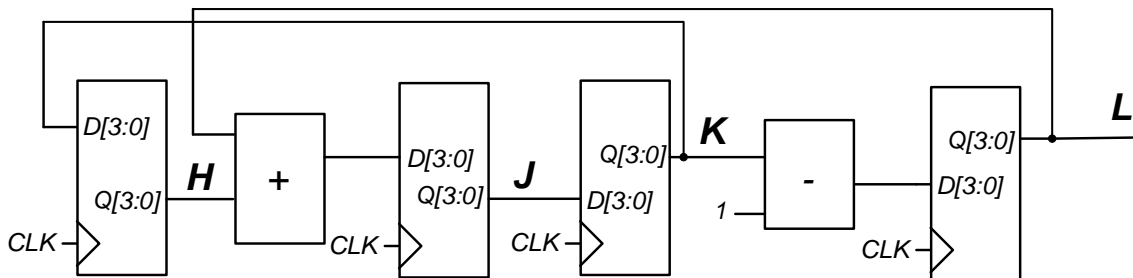
## Register Sequence Waveforms

1. Complete the waveform for the sequential circuit shown below by filling in the decimal value that each register will output during each clock cycle.



$$\begin{aligned} H^* &= L \\ J^* &= H + K \\ K^* &= J \\ L^* &= K + 3 \end{aligned}$$

2. Complete the waveform for the sequential circuit shown below by filling in the decimal value that each register will output during each clock cycle.



$$\begin{aligned} H^* &= K \\ J^* &= H + L \\ K^* &= J \\ L^* &= K - 1 \end{aligned}$$